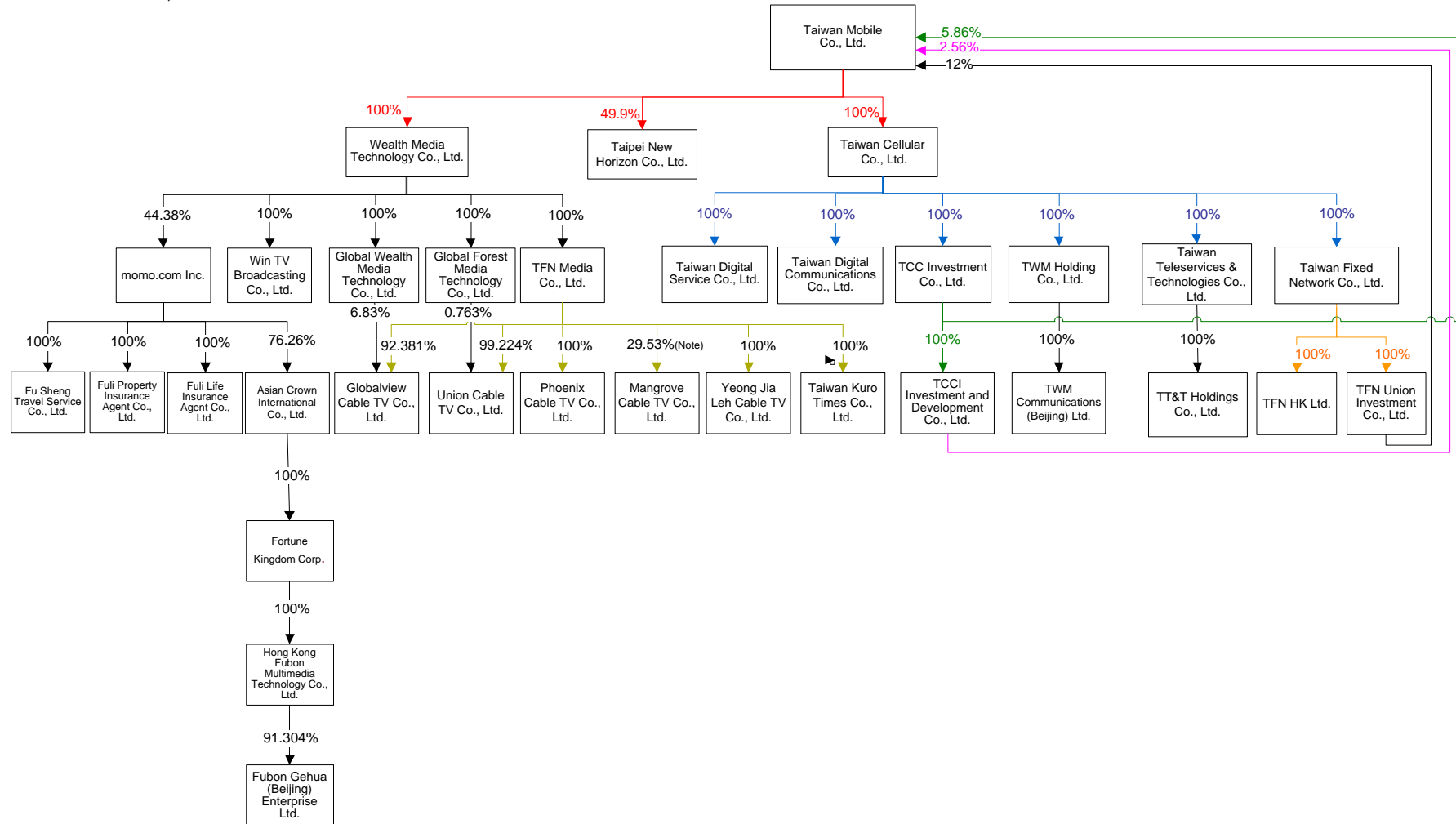


Chapter 7. Special Notes

Affiliates

1. Investment holding structure

As of December 31, 2014



Note: 70.47% of shares are held under trustee accounts.

2. Affiliates' profile

December 31, 2014; Unit: NT\$ (unless otherwise stated)

Name	Date of incorporation	Address	Paid-in capital	Main business
Taiwan Cellular Co., Ltd.	2005.09.20	13F, No. 88, Yanchang Rd., Xinyi District, Taipei	3,711,958,000	Investment
Taiwan Fixed Network Co., Ltd.	2007.01.30	8F, No. 88, Yanchang Rd., Xinyi District, Taipei	21,000,000,000	Fixed-line service provider
Taiwan Digital Service Co., Ltd.	2013.04.02	13F, No. 88, Yanchang Rd., Xinyi District, Taipei	200,000,000	Telecommunications service agency and retail business
Wealth Media Technology Co., Ltd.	2007.08.07	8F, No. 88, Yanchang Rd., Xinyi District, Taipei	420,650,000	Investment
TFN Media Co., Ltd.	2005.01.25	11F, No. 98, Zhouzi St., Neihu District, Taipei	2,309,213,040	Cable broadband and value-added services provider
Win TV Broadcasting Co., Ltd.	2005.10.17	11F, No. 98, Zhouzi St., Neihu District, Taipei	181,773,820	TV program provider
Globalview Cable TV Co., Ltd.	1995.11.25	No. 206, Datong Rd., Sec. 2, Xizhi District, New Taipei City	560,000,000	Cable TV service provider
Union Cable TV Co., Ltd.	2005.02.04	No.179, Nujhong Rd., Sec. 1, Yilan City, Yilan County	1,704,632,800	Cable TV service provider
Yeong Jia Leh Cable TV Co., Ltd.	1994.09.26	10F, No. 651-5, Zhongzheng Rd., Xinzhuang District, New Taipei City	339,400,000	Cable TV service provider
Phoenix Cable TV Co., Ltd.	1996.08.22	No. 312, Fongping 1st Rd., Daliao Township, Greater Kaohsiung	680,901,980	Cable TV service provider
Mangrove Cable TV Co., Ltd.	1996.01.23	5F, No. 33, Lane 3, Zhongzheng E. Rd., Sec. 1, Danshui District, New Taipei City	211,600,000	Cable TV service provider
Taipei New Horizon Co., Ltd.	2009.01.07	6F, No. 88, Yanchang Rd., Xinyi District, Taipei	3,845,000,000	Infrastructure projects and operations
Taiwan Kuro Times Co., Ltd.	2009.02.11	8F, No. 88, Yanchang Rd., Xinyi District, Taipei	136,730	Online music and gaming services
Taiwan Teleservices & Technologies Co., Ltd.	2001.06.08	13F-1, No. 172-1, Jilong Rd., Sec. 2, Taipei	24,843,000	Call center service and telemarketing
TWM Communications (Beijing) Ltd.	2002.09.17	Room 2106, No. 9, Beisihuan West Rd., Haidian District, Beijing, China	US\$3,000,000	Mobile application development and design
TCC Investment Co., Ltd.	2009.08.10	13F, No. 88, Yanchang Rd., Xinyi District, Taipei	221,030,440	Investment
TFN Union Investment Co., Ltd.	2009.09.22	13F, No. 88, Yanchang Rd., Xinyi District, Taipei	4,000,000	Investment
TCCI Investment and Development Co., Ltd.	2009.09.22	8F, No. 88, Yanchang Rd., Xinyi District, Taipei	4,000,000	Investment
Taiwan Digital Communications Co., Ltd.	2007.06.06	8F, No. 88, Yanchang Rd., Xinyi District, Taipei	112,000,000	TV program production and mobile phone wholesale
TFN HK Ltd.	2003.05.14	Unit 511, 5/F, Tower 1, Silvercord, 30 Canton Road, Tsimshatsui, Kowloon, Hong Kong	HK\$1,300,000	Telecommunications service provider

Name	Date of incorporation	Address	Paid-in capital	Main business
Global Wealth Media Technology Co., Ltd.	2007.10.26	1F, No. 206, Datong Rd., Sec. 2, Xizhi District, New Taipei City	89,448,670	Investment
Global Forest Media Technology Co., Ltd.	2008.12.26	8F, No. 88, Yanchang Rd., Xinyi District, Taipei	15,000,000	Investment
TWM Holding Co., Ltd.	2006.06.09	Arias, Fabrega & Fabrega Trust Co., BVI Ltd. 325 Waterfront Drive, Road Town, Tortola, British Virgin Islands	US\$1	Investment
TT&T Holdings Co., Ltd.	2004.10.08	TrustNet Chambers Lotemau Centre, P.O. Box 1225, Apia, Samoa	US\$1,300,000	Investment
momo.com Inc.	2004.09.27	4F, No. 96, Zhouzi St., Neihu District, Taipei	1,420,585,000	Wholesale and retail sales
Fu Sheng Travel Service Co., Ltd.	2004.12.16	7F, No. 92, Zhouzi St., Neihu District, Taipei	25,000,000	Travel agency
Fuli Life Insurance Agent Co., Ltd.	2005.12.27	7F, No 98, Zhouzi St., Neihu District, Taipei	3,000,000	Life insurance agency
Fuli Property Insurance Agent Co., Ltd.	2006.01.03	7F, No. 96, Zhouzi St., Neihu District, Taipei	3,000,000	Property insurance agency
Asian Crown International Co., Ltd.	2009.01.07	Palm Grove House, P.O. Box 438, Road Town, Tortola, British Virgin Islands	US\$34,750,000	Investment
Fortune Kingdom Corp.	2009.01.06	Equity Trust Chambers, P.O. Box 3269, Apia, Samoa	US\$33,632,777	Investment
Hong Kong Fubon Multimedia Technology Co., Ltd.	2010.03.18	Unit 511, Tower 1, Silvercord, 30 Canton Road, Tsimshatsui, Kowloon, Hong Kong.	US\$33,632,777	Investment
Fubon Gehua (Beijing) Enterprise Ltd.	2010.12.08	Room 101-106, Building No. 402, A10 North Jiuxianqiao Road, Chaoyang District, Beijing, China	RMB230,000,000	Wholesale sales

3. Affiliates' operating highlights

December 31, 2014; Unit: NT\$'000

Company name	Paid-in capital	Total assets	Total liabilities	Net worth	Operating revenue	Operating income	Net income	EPS (NT\$)
Taiwan Cellular Co., Ltd.	3,711,958	85,574,400	7,501	85,566,899	-	(664)	7,383,016	19.89
Taiwan Fixed Network Co., Ltd.	21,000,000	58,505,607	4,449,294	54,056,313	14,189,597	6,235,050	5,379,331	2.56
Taiwan Digital Service Co., Ltd.	200,000	2,782,381	1,292,257	1,490,124	16,874,886	558,205	467,479	23.37
Wealth Media Technology Co., Ltd.	420,650	20,633,311	6,722	20,626,589	-	(352)	2,703,674	67.12
TFN Media Co., Ltd.	2,309,213	13,631,673	4,027,746	9,603,927	3,110,461	1,743,609	2,196,291	9.51
Win TV Broadcasting Co., Ltd.	181,774	694,607	445,363	249,244	840,132	39,126	37,942	2.09
Globalview Cable TV Co., Ltd.	560,000	904,455	204,218	700,237	507,201	91,988	80,554	1.44
Union Cable TV Co., Ltd.	1,704,633	2,209,940	321,419	1,888,521	641,540	129,002	104,740	0.61
Yeong Jia Leh Cable TV Co., Ltd.	339,400	1,110,111	375,686	734,425	1,166,129	250,486	212,371	6.26
Phoenix Cable TV Co., Ltd.	680,902	1,392,615	306,279	1,086,336	1,217,054	242,633	209,332	3.07
Mangrove Cable TV Co., Ltd.	211,600	606,186	221,163	385,023	491,487	122,942	103,652	4.90
Taipei New Horizon Co., Ltd.	3,845,000	8,378,322	4,925,563	3,452,759	425,383	53,658	(32,425)	(0.08)
Taiwan Kuro Times Co., Ltd.	137	351,648	217,595	134,053	805,994	118,604	98,659	7,215.58
Taiwan Teleservices & Technologies Co., Ltd.	24,843	450,210	343,243	106,967	1,184,268	67,575	60,057	24.17
TWM Communications (Beijing) Co., Ltd.	95,130	87,394	167	87,227	816	(1,999)	105	NA
TCC Investment Co., Ltd.	221,030	29,564,683	527,846	29,036,837	1,481,370	1,479,959	1,485,742	67.22
TFN Union Investment Co., Ltd.	4,000	42,915,733	1,236,104	41,679,629	2	(187)	(137)	(0.34)
TCCI Investment and Development Co., Ltd.	4,000	9,229,904	337,614	8,892,290	1,233,215	1,232,971	1,159,077	2,897.69
Taiwan Digital Communications Co., Ltd.	112,000	116,310	70	116,240	23,077	(659)	(126)	(0.01)
TFN HK Ltd.	5,313	33,507	16,629	16,878	85,872	3,777	3,200	2.46
Global Wealth Media Technology Co., Ltd.	89,449	97,465	74	97,391	-	(180)	5,326	0.60
Global Forest Media Technology Co., Ltd.	15,000	17,698	54	17,644	-	(267)	535	0.36
TWM Holding Co., Ltd.	0.032	261,285	60	261,225	-	(207)	9,548	9,547,784
TT&T Holdings Co., Ltd.	40,943	52,284	-	52,284	-	-	3,260	2.51
momo.com Inc.	1,420,585	9,601,179	3,290,189	6,310,990	23,442,127	1,597,377	1,170,042	9.11

Company name	Paid-in capital	Total assets	Total liabilities	Net worth	Operating revenue	Operating income	Net income	EPS (NT\$)
Fu Sheng Travel Service Co., Ltd.	25,000	321,940	271,521	50,419	52,031	27,353	21,157	8.46
Fuli Life Insurance Agent Co., Ltd.	3,000	11,991	707	11,284	3,927	3,284	2,788	9.29
Fuli Property Insurance Agent Co., Ltd.	3,000	12,886	355	12,531	5,318	4,289	3,634	12.11
Asian Crown International Co., Ltd.	1,068,610	253,702	-	253,702	-	-	(191,776)	(7.56)
Fortune Kingdom Corp.	1,035,051	248,827	-	248,827	-	-	(192,008)	(7.67)
Hong Kong Fubon Multimedia Technology Co., Ltd.	1,035,051	248,827	-	248,827	-	(101)	(192,008)	(7.67)
Fubon Gehua (Beijing) Enterprise Ltd.	1,171,850	368,164	96,292	271,872	403,445	(205,274)	(216,774)	NA

Note : Exchange rate of US\$1=NT\$31.71, HK\$1=NT\$4.087 and RMB1=NT\$5.095 as of December 31, 2014

Average exchange rate of US\$1=NT\$30.2983, HK\$1=NT\$3.9066 and RMB1=NT\$4.9192 for 2014